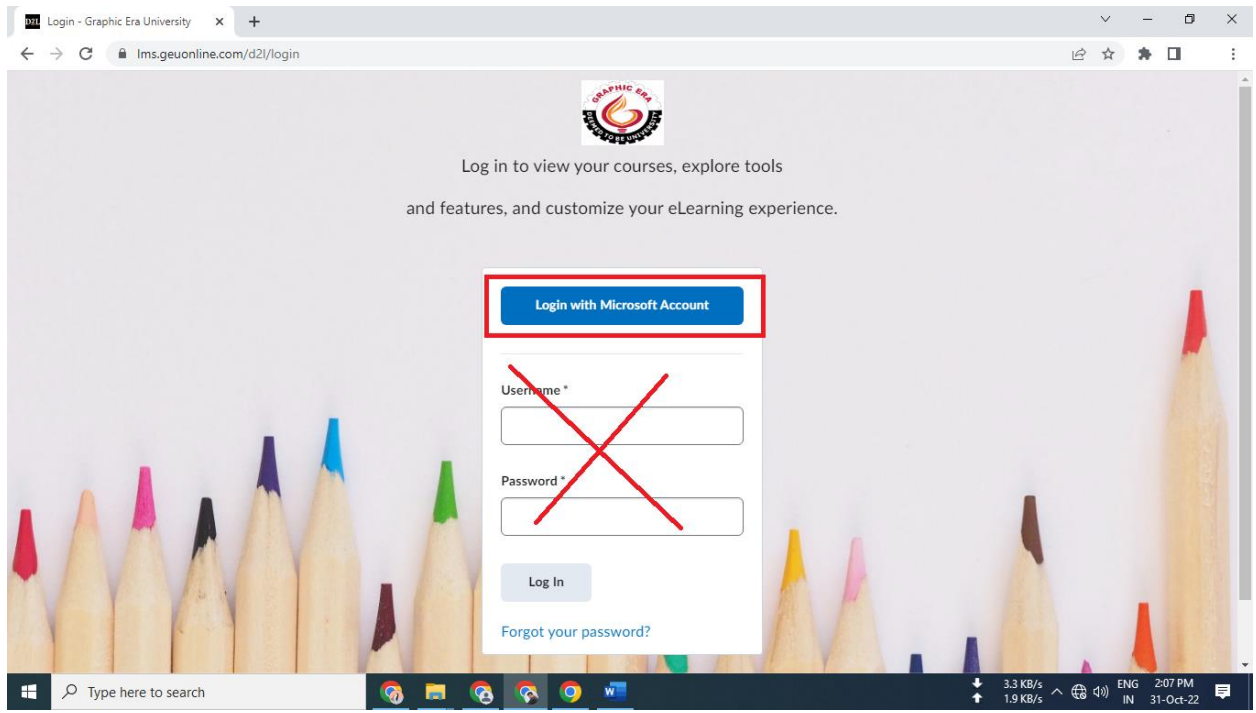
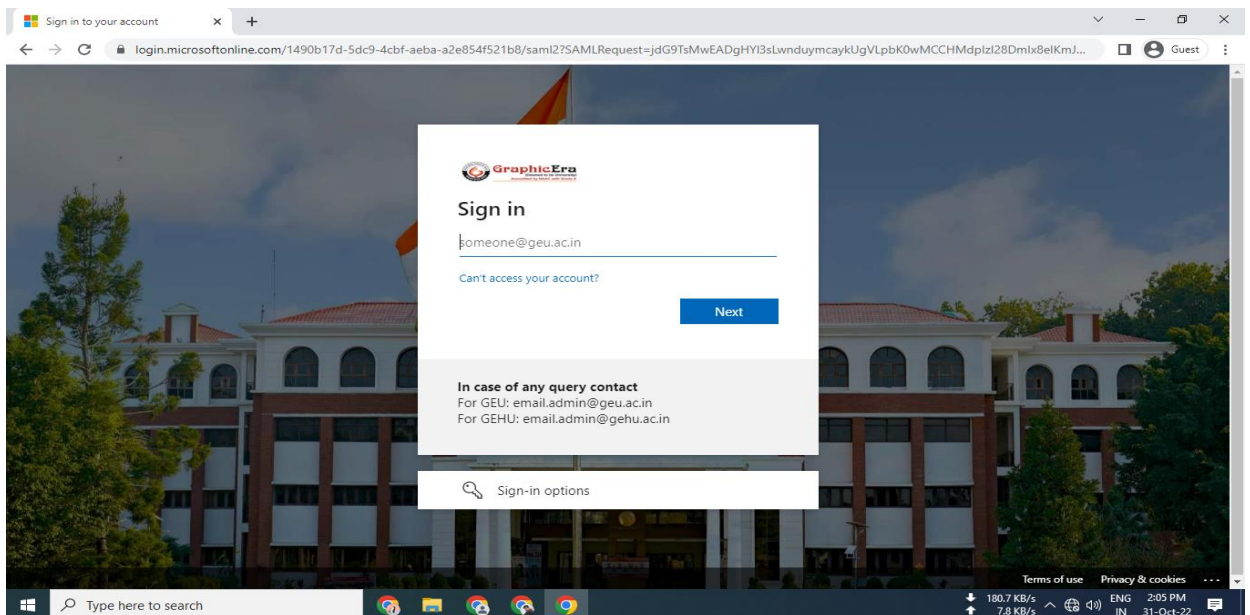


How to login into Brightspace LMS

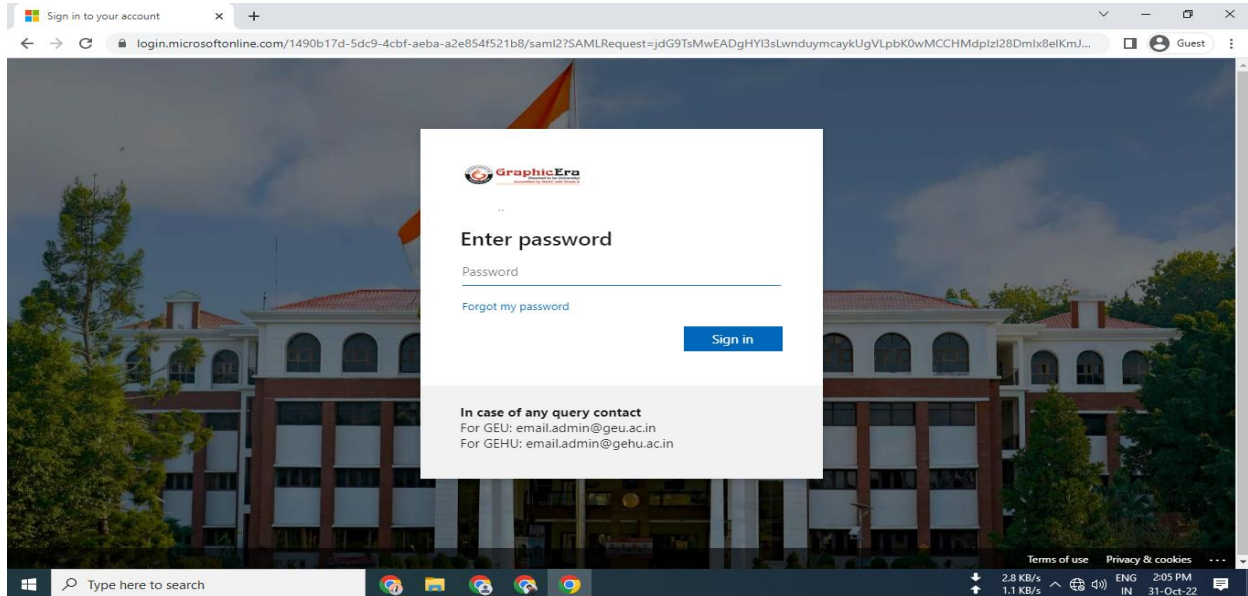
1. Open website <https://lms.geuonline.com>
2. Click on “Login with Microsoft Account” button.



3. Enter Microsoft Official Email id and click on Next button.



4. Enter Microsoft Official Email ids password and click on Sign in.



5. Note:

- a. In case if you are login in for the first time and if it asks for update your password, update it and if it also asks for add mobile number and email id, add that.
- b. In case if you get this error **“Sorry, but we’re having trouble signing you in.”** Make sure you are signing with correct Email id.

6. Now, you are login in into Brightspace LMS.

